

Targeting a Safer World®



ACCIPITER®
ACCIPITERRADAR.COM

***Accipiter® Surveillance Solutions for
Ports & Connected Waterways***

Providing shared maritime domain
awareness (MDA) to all who need it



WORLD'S MOST EFFECTIVE AND AFFORDABLE WIDE-AREA SITUATIONAL AWARENESS

Accipiter provides the world's most effective and affordable wide-area situational awareness solutions for applications that impact the safety and well-being of the public, individuals and the environment.

Accipiter® surveillance solutions for ports and connected waterways act as a force multiplier for their public and private stakeholders who participate in the safe, efficient, and lawful movement of goods and people using vessels from small pleasure craft to large cargo and cruise ships. Real-time awareness of vessel activity of interest along with historical understanding of traffic patterns is provided right to your fingertips on any mobile device through Accipiter's patented Cloud Surveillance® and Cloud Intelligence® infrastructure. This shared MDA allows users to smartly manage their respective operations with the information they need, and enables stakeholder collaboration, information sharing and interoperability.

Connected Waterways

GLOBAL PROVIDER OF HIGH PERFORMANCE RADAR SOLUTIONS

Accipiter Radar is a global provider of high-performance radar surveillance solutions built on its patented Radar Intelligence Network™ (RIN) platform technology and sold under the Accipiter® brand. Accipiter's Surveillance-to-Intelligence™ (S2I) solutions are designed to automatically detect, track and provide alerts involving small uncooperative targets such as pleasure-craft in marine environments, drones, birds and general aviation aircraft in the airspace, and people and vehicles on the ground. Our solutions also track larger cooperative targets such as ships with AIS and commercial aircraft with ADS-B.

Our systems are deployed at ports and airports, along waterways and borders, at critical infrastructure and energy facilities. The result is enhanced safety and security through unprecedented all domain awareness, understanding and decision support.

WORLDWIDE PRESENCE AND SUPPORT

Accipiter Radar Technologies Inc. is headquartered in Ontario, Canada and Accipiter Radar Corporation is headquartered in New York State, USA. Our extensive network of qualified strategic partners enables us to deliver high quality systems and services globally, ensuring excellence in matching system selection and specifications to customer requirements, installation, training, documentation and local maintenance and technical support.

Our in-house team of experts in advanced radar and RF engineering, information technology and software development, partnered with in-house domain expertise in port operations, homeland security, public safety, law enforcement, ornithology, and aviation safety, deliver the most capable and affordable, situational awareness systems on the market today.



Efficient port operations, with ships avoiding obstructions ahead by slowing down enroute to save fuel and green house gas emissions, and arriving just in time.

ACCIPITER'S RADAR INTELLIGENCE NETWORK™ PLATFORM TECHNOLOGY

Accipiter offers several carefully engineered Accipiter® surveillance systems to address your particular port and partner/stakeholder missions; and they are all built on our patented and game-changing Radar Intelligence Network™ (RIN) platform technology. The RIN architecture ensures your system can easily adapt and grow with your changing threats and needs and can leverage components you have already purchased.

Our novel approach to wide-area, real-time detection, tracking, post processing, and display coupled with on-the-fly and interactive analytics applied to historical target data sets us apart from any other radar or sensor system provider, by giving you unprecedented situational understanding and decision support.

Our Accipiter® architecture allows any number of sensors to seamlessly connect over any TCP/IP network to our patented M³® Target Information System which forms the heart of all our delivered systems. And because the RIN was engineered to be radar agnostic, the right-sized 2D/3D radar sensor(s) can be selected for your application. Co-operative vessel awareness using AIS is fully supported. Accipiter also provides an integrated ADS-B sub-system for cooperative aircraft tracking, and seamless integration with public data sources such as a NOAA weather feed.

M³® TARGET INFORMATION SYSTEM

Accipiter's multi-sensor, multi-mission, multi-user M³® Target Information System (TIS) provides the ultimate in multi-sensor target data processing, query and retrieval, enabling rapid and efficient understanding that leads to strategic and tactical decision making.

The TIS not only organizes, stores indefinitely, fuses, analyzes, manages and distributes the rich sensor target data in earth coordinates; but it also drives an ecosystem of user apps we call Surveillance-to-Intelligence™ (S2I) tools to deliver tactical and strategic information to users. Furthermore, the TIS provides sophisticated radar/sensor slew-to-cue capabilities which control PTZ cameras to follow targets of interest, capture camera snapshots and video, and allow targets to be identified.

SURVEILLANCE-TO-INTELLIGENCE™ (S2I) TOOLS

Accipiter provides a suite of S2I tools that are easy to use securely from anywhere, right from your favorite browser.

Tactical tools such as the Accipiter® Common Operating Picture (COP) provide port users with real-time situational

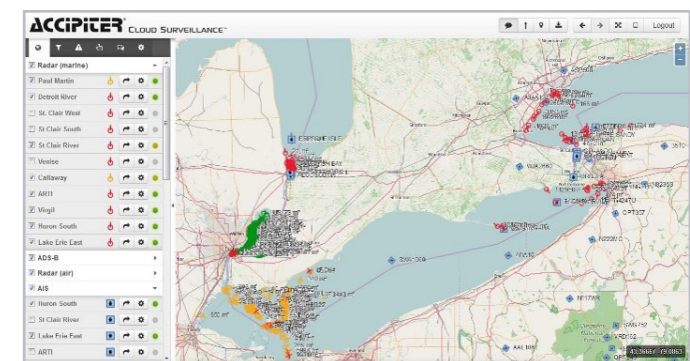
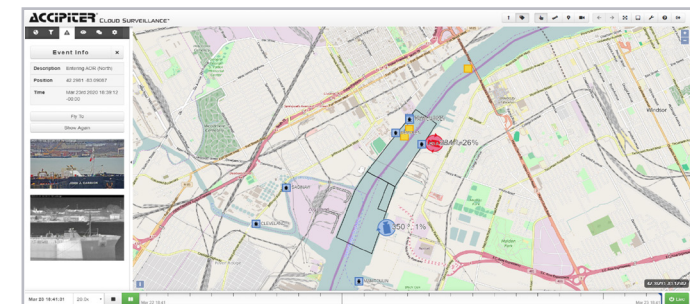
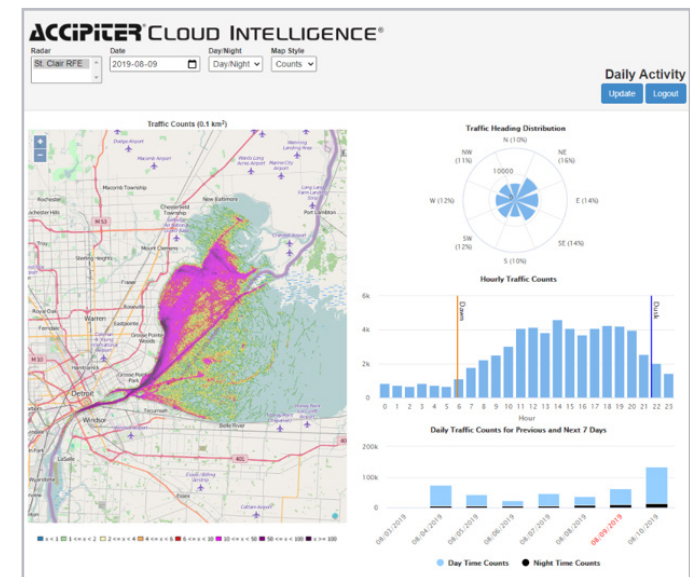
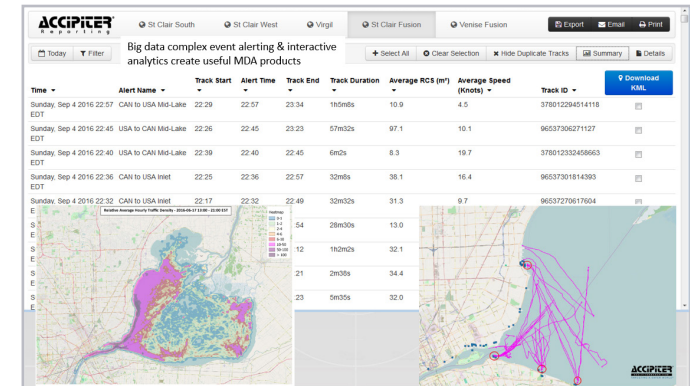
Safe navigation is assured with radar to protect against loss of AIS.

awareness including automated detection and alerting of targets of interest in your area of responsibility (AOR), based on your operational or threat definitions. This allows officials to rapidly assess the situation and execute appropriate mitigation procedures.

Our tablet-based Mobile Response COP gives responders in vehicles, vessels or aircraft a user-centric display, allowing them to more easily put their own eyes on live situations of interest so they can close in and assist. The COP, in different configurations and operating at different locations, also provides awareness to your stakeholders and partners facilitating communication and team play.

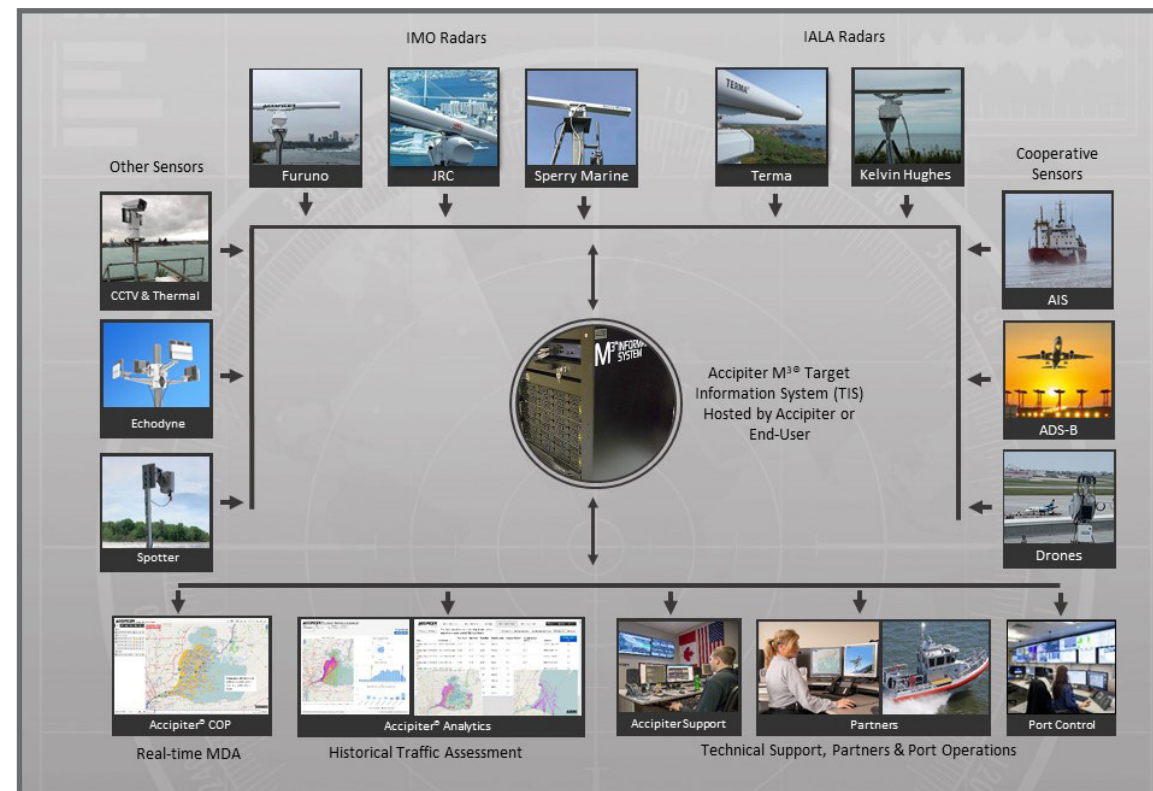
Our strategic S2I tools interactively or on-the-fly rapidly mine the TIS's historical target data to give analysts understanding of vessel activity patterns. These tools are designed to provide business intelligence (e.g., when and where are situations or threats most prevalent), artificial intelligence (for use in the classification and filtering of weather and birds from targets of interest, and in improved situation or threat alerting), and to support incident investigation, analysis, training, risk assessment, planning and scheduling throughout your AOR.

The TIS also integrates with your security management system, and enterprise GIS and business intelligence systems; supports customer tool development, any number of users and sensors, and insulates your decision support tools and standard operating procedures from sensor life cycle changes.



Accipiter® S2I Tools

The Accipiter® Radar Intelligence Network™ Architecture





Accipiter® Surveillance Solutions for Ports & Connected Waterways

AN ACCIPITER® SHARED MDA SYSTEM IS AN ESSENTIAL PART OF DECISION SUPPORT FOR PORTS AND THEIR PARTNERS

Port Authorities today are called upon to manage and drive competitive port operations which are economically efficient, environmentally friendly, safe, and secure. This is only achievable and affordable with shared maritime domain awareness (MDA) which supports collaboration, information sharing and interoperability with your partners and stakeholders, including shipping companies, terminal operators, coast guards, navigation authorities and regulators, waterside industrials, intermodal transportation partners (trucking/bridges, airports, rail), natural resource authorities, law enforcement, governments including indigenous communities, non-government organizations and the public. Harbormasters need to direct vessel traffic safely and efficiently through their ports, respond to accidents, spills and natural disasters including flooding, coordinate ice breaking, enforce marine regulations, support federal, provincial/state, municipal/county and public concerns, and facilitate recreation, tourism and trade. Port partners and stakeholders all have a part to play in meeting these shared goals; and there is a right-sized, flexible, and expandable Accipiter® surveillance solution for you and them to provide the needed decision support.

Our patented Accipiter® surveillance solutions incorporate a co-operative target receiving sub-system (AIS for ships, ADS-B for aircraft), a radar sub-system for tracking small pleasure-craft and low-flying general aviation aircraft, and smart, slew-to-cue PTZ daytime/thermal cameras to get your eyes on targets of interest. Our M³® Target Information System (TIS) provides sensor integration, target data integration and fusion, post-processing including AI (artificial intelligence) and threat alerting, and target data management and distribution. The TIS also drives an eco-system of Surveillance-to-Intelligence™ (S2I) tools, including integration with third-party command and control (C2) systems, which provide the desired decision support to each of your partners and stakeholders.

OPERATIONAL ADVANTAGES

Supports Port & Partner/Stakeholder Operations through:

- The M³® TIS provides secure, flexible, expandable, physical/virtual sensor networks with advanced processing & decision support
- State-of-the-art and legacy IMO and IALA radar sensors will plug and play as a result of built-in sensor agnosticity
- Automatic Identification System (AIS) and Automatic Dependent Surveillance-Broadcast (ADS-B) receivers available and plug and play
- Intelligent, automated, radar-activated, PTZ cameras plug and play with slew-to-cue to follow and identify vessels of interest
- Advanced digital signal and data processing to automatically detect and track vessels and reject clutter & interference
- Real-time displays with smart, user-definable threat alerting capabilities you can tailor to your particular requirements
- Sophisticated, historical data analytics to help you understand traffic activity patterns and schedule/optimize your operations
- Provides information sharing and interoperability with your partners and stakeholders delivering shared MDA

Benefits:

- Various Accipiter® S2I tools deliver user-customizable decision support to watch standers, responders, and analysts anywhere securely via their browsers with unmatched situational awareness and understanding, including real time monitoring and threat alerting, historical event/incident review and reporting, and risk analysis
- Right-size the number and types of sensors that best and most cost-effectively support your mission (not locked into proprietary solution); and grow your system without starting over
- We can integrate your existing sensors into our solution
- We integrate real-time and historical data with your enterprise business intelligence, GIS, and VTMS information systems
- Easily adapt your solution to a changing threat, facility, and/or technology environment
- Own your system or subscribe for Cloud Surveillance® and Cloud Intelligence® services (Radar-as-a-Service, Camera-as-a-Service)



UNITED STATES

40 Centre Drive, Suite 300
Orchard Park, NY 14127
Telephone 1 (716) 508-4432
Facsimile 1 (888) 393-6421

CANADA

576 HWY 20 W
Fenwick, ON L0S 1C0
Mail Only: P.O. Box 939, Fonthill, ON, L0S 1E0
Telephone 1 (905) 228-6888
Facsimile 1 (905) 892-2249